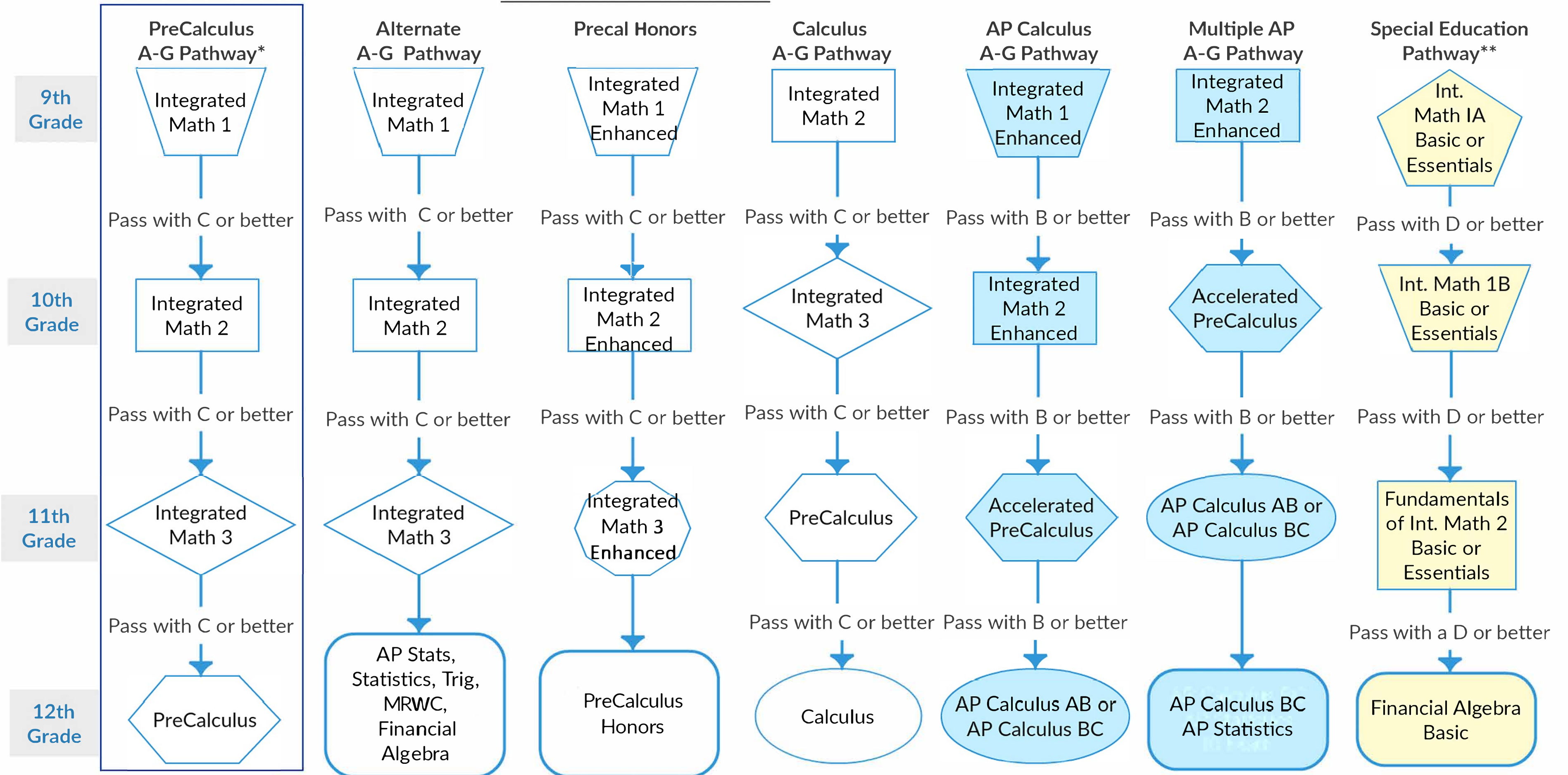


SHS Mathematics

Recommended 4-Year Course Pathways



These are **sample** pathways that students may follow with the new courses. There is some fluidity which enables students to move from one pathway to another or accelerate if needed. If you have questions about pathways or placement, please contact your High School Math Teacher.

*The PreCalculus A-G Pathway is the General Education Recommended A-G Pathway. The majority of A-G students will follow this path.

** The Special Education Pathway is for Basic, Essentials, or SDC students and is not A-G. Mainstreamed Special Education students should follow one of the A-G Pathways.